

# WiFi BASE STATION



Base station WiFi (Part: LCBS-W) wirelessly connects to Crosby Straightpoint load cells or wire rope tension meter (BOLT) transmitting load cell load data and alerts via the local WiFi network to the LoadConnect online dashboard.

The LCBS-W base station can be paired/connected with up to 16 SP wireless load cells (or 15 wireless and 1 cabled) for large-scale or hard-to-reach projects requiring permanent load monitoring.

Ideal for use within facilities, factories or construction sites where detailed logging and reporting of load cell (crane) productivity, safety alerts, and throughput is required.



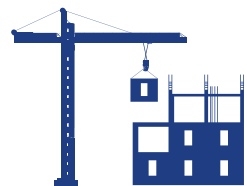
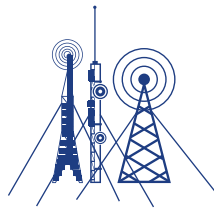
## FEATURES

- Connect to up to 16 load cells
- Transmits live load data to an online dashboard
- Connect to BOLT to monitor tension on cables
- Connect to SP load cells to monitor loads
- Detailed logging of events and utilisation
- Productivity reporting of lifts and alarm conditions
- Safety and system status alerts



## BENEFITS

- Improve worksite safety with real-time load data
- Reduce site visits to remote sites
- Improve productivity by data analysis
- Faster reaction and collaboration
- Protect assets such as cranes and product
- Monitor lifting projects from across the globe





### How it works

Connected Crosby SP load cells transmit data, to the paired LoadConnect base station, this data is then sent in real-time to the LoadConnect online dashboard.

Log in online from any location with an internet connection to the dashboard to view live load data, load alerts, asset location, share reports, and view productivity and utilisation from a PC, laptop or tablet - from anywhere in the world.

Base station supplied with USB dongle and configuration software to enable set up of load cell IDs, limits and local WiFi.

### Required

- Connection to WiFi
- LCBS-W base station on site
- SW-D USB dongle and PC toolkit software for set up (supplied with LCBS-W)
- Power source 9-28v dc (backup battery gives 8hrs support) - could be solar or wind-generated.
- Up to 16 load cells, this can include one cabled.
- Subscription to LoadConnect online dashboard – free for the first year

Part number	LCBS-W
<b>Crosby Part</b>	<b>2789596</b>
Required Power Supply	9 to 28 V DC
Radio frequency	2.4 GHz (License Free)
Maximum number of Loadcells	16 wireless (or 15 wireless & 1 cabled)
Range	Up to 500 m / 1640 ft
Operating temperature	-10 to +50 °C / 14 to 122°F
Backup battery life	8 hours
Cabled loadcell Input	1x 4-20mA (2 wire) OR 1x mV/V
Weight	2.75 kg / 6lbs
Connectivity	2.4GHz WiFi
Frequency band	NA
SIM type	NA
Alert functionality	Subscription to online dashboard only <b>(No SMS Alerts)</b>
IP Rating	IP67/NEMA6
Dimension	560 x 260 x 90 mm / 22" x 10.2" x 3.5" - antennas included
<b>User configuration is required via free software supplied</b>	