



ChainSafe plus is designed to be fitted along the length of the chain with an array of The Crosby Group chain fittings, and is an approved wireless tension load cell capable of load monitoring of capacities up to 4t.

Links:



A-1361 S-1370 MG

Lashing:



GT tensioner

Connectors:



S-1325 CG CL

Grab Hooks:



A-1358 A-1338 L-1358 L-1338 S-1311 GG GG LP

Hooks:



S-1359 S-1327 S-1317 EGKN EGK GBK BKG

The ChainSafe design not only provides the product with an unrivalled strength to weight ratio but it also allows the use of a separate internal sealed enclosure.

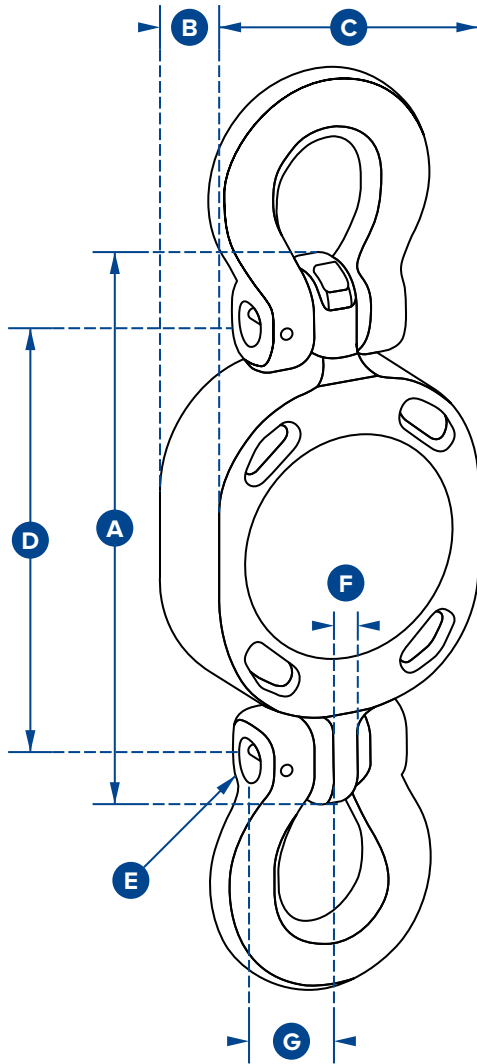
This provides the load cell's electronic components with IP67 or NEMA6 environmental protection, even with the battery cover plate missing, making this industry-leading dynamometer even more suitable for use in the harshest environments.

The versatile ChainSafe is supplied with an update rate of 3Hz and can be easily configured to run at industry-leading speeds of up to 200Hz.

A full array of accessories are available for mooring, load securing and lashing.

Features and benefits:

- Designed to work along the length of 10mm chain.
- Bluetooth wireless range of 100m/328ft.
- Lightweight load cell easily attached to the length of chain.
- No battery change required - Battery life 5 years based on 2hrs use per day.
- Environmentally protected to IP67/NEMA6.
- Internal Antennae.



Part Numbers	
SP	CS4T-CROSBY
Crosby	2789536
Capacity	4te
	8800lb
Resolution	0.002te
	4lb
Units	tonne
	lb
Weight	2.5kg
	5.5lb
Safety Factor	4:1
Battery Type	Lithium Thionyl Chloride (non replaceable)
Battery Life	5 years based on 2hrs use per day
Operating Temp	-10°C to +50°C or 14°F to 122°F
Accuracy	±0.2% of full scale
System Range	100 metres or 328 feet
Data Rate	3Hz
Protection	IP67 or NEMA6
Dimension A	164
	6.46"
Dimension B	35
	1.38"
Dimension C	85
	3.35"
Dimension D	132
	5.20"
Dimension ØE	13.2
	0.52"
Dimension F	11
	0.43"
Dimension G	28
	1.10"
Dimension H	N/A
	N/A
Recommended Fittings	10mm or 3/8" G100 Chain Fittings